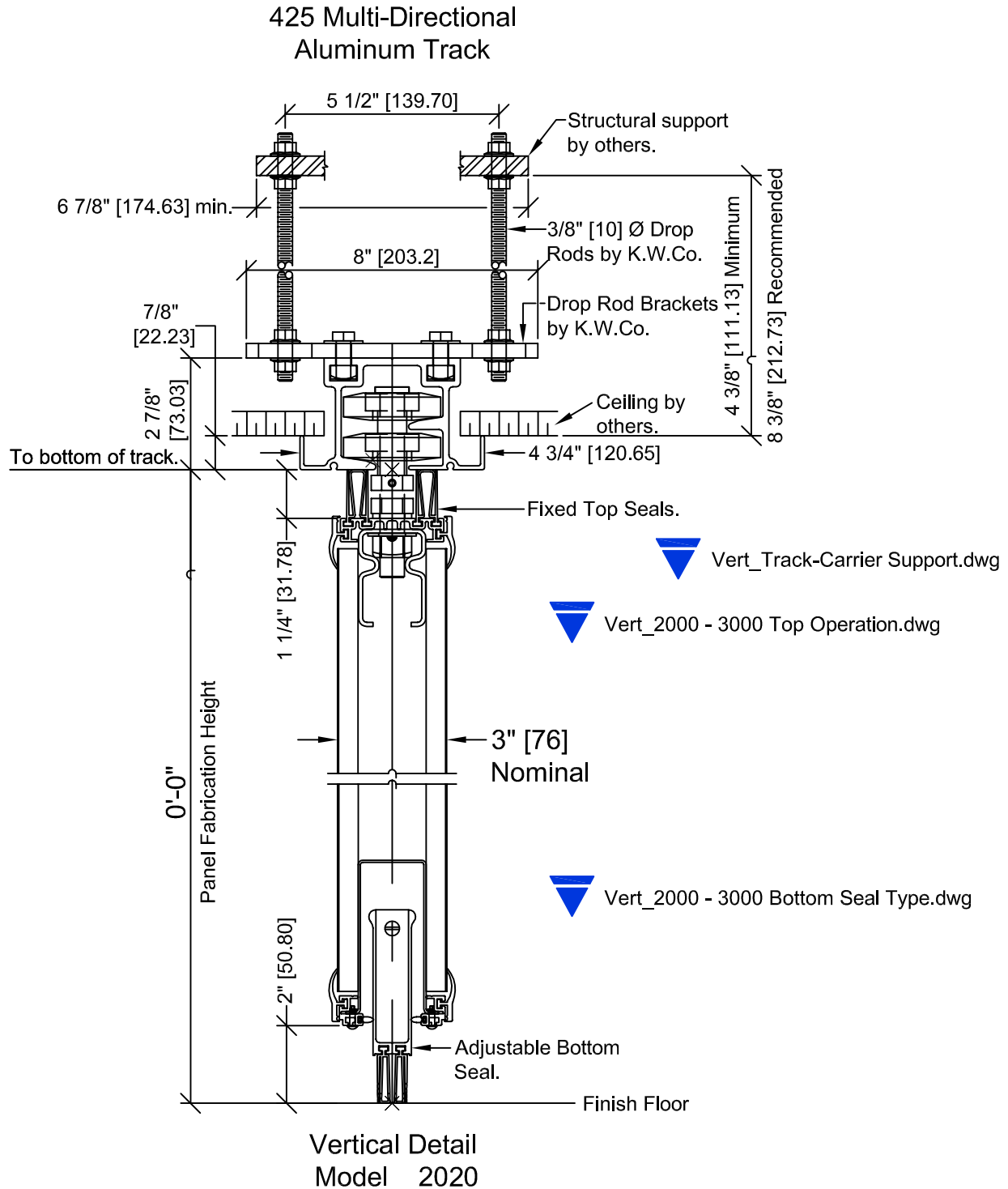
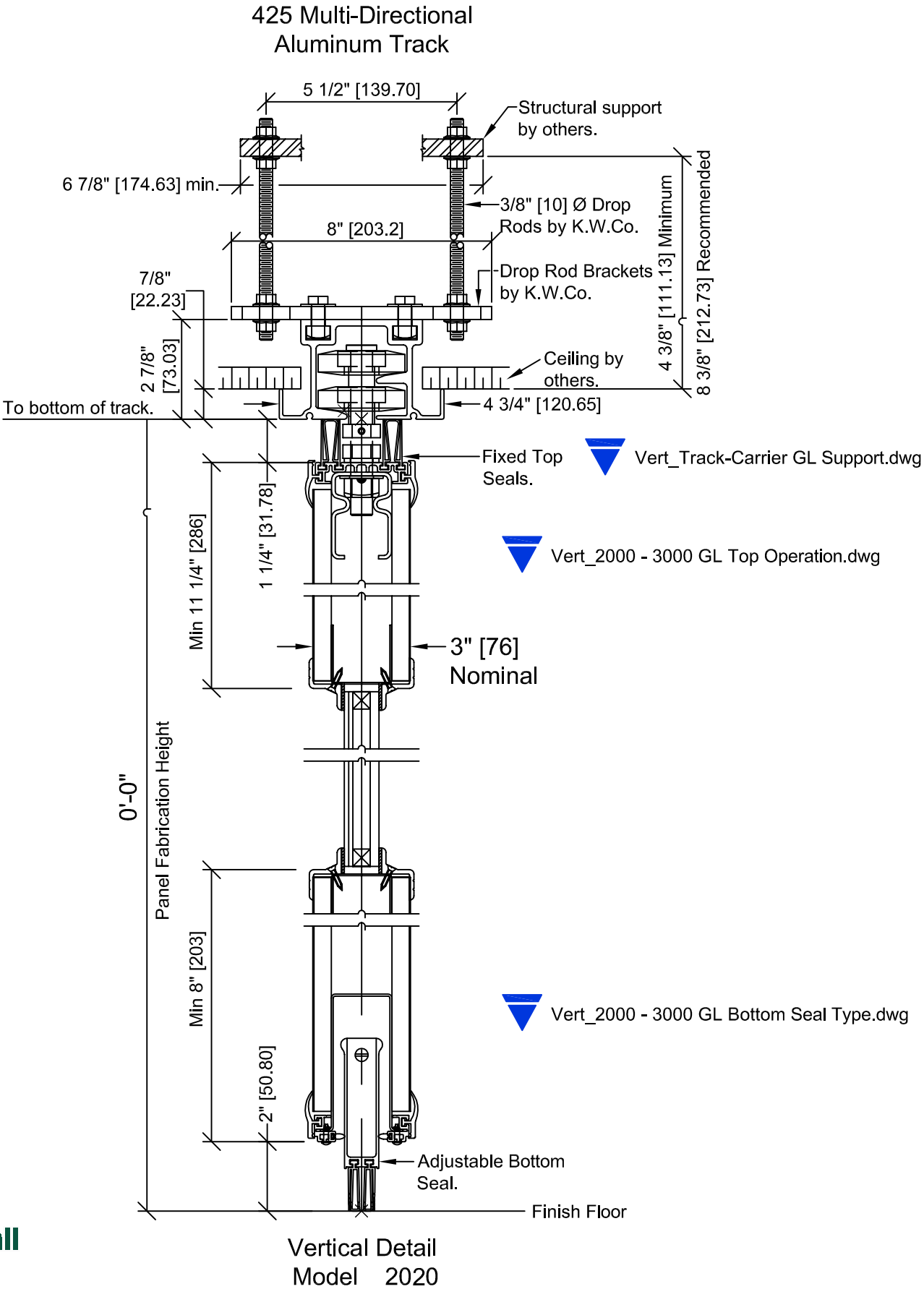


NOTE: Copy and Paste these Blocks into project. Or Insert the blocks per the Noted CAD name from Zip. Use the Triangle Drop-down Menus to meet your project requirement. Call Local Distributor if you have questions.



NOTE: Copy and Paste these Blocks into project. Or Insert the blocks per the Noted CAD name from Zip. Use the Triangle Drop-down Menus to meet your project requirement. Call Local Distributor if you have questions.

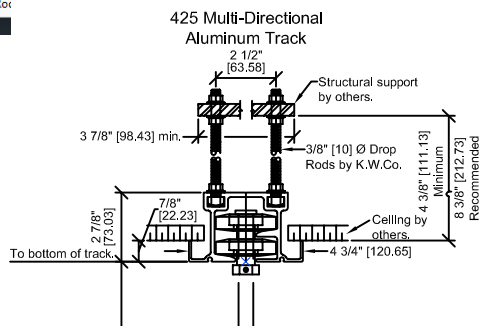


Multi-Directional Track Support Options

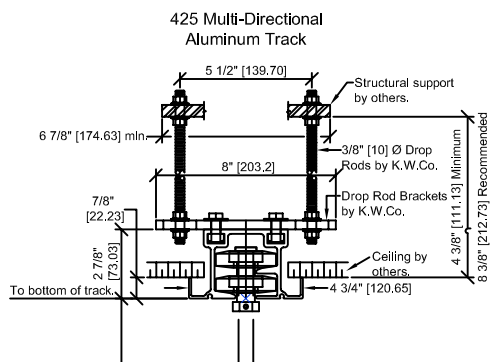
Hinged Pair (Single Carrier) Track Support Options

425 Aluminum Track - up to 525 lb weight per Carrier: *Max ht 14'-2" (See Weight Chart)

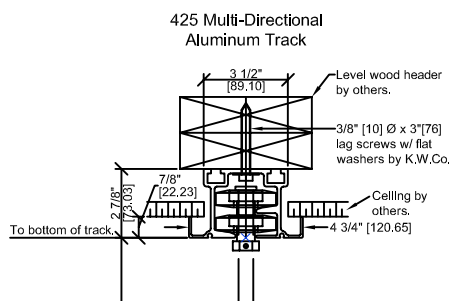
**425
Aluminum
Track - 2.5"
Drop Rod to
Structure**



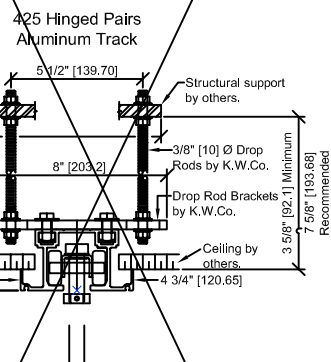
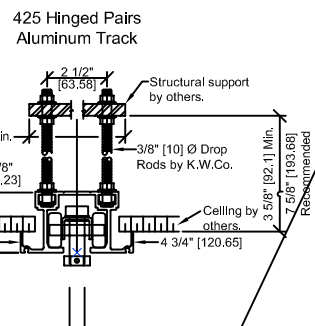
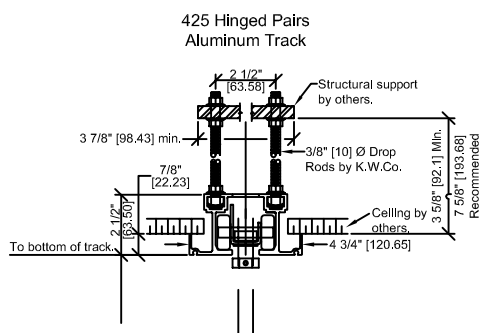
**425
Aluminum
Track - 5.5"
Drop Rod to
Structure**



**425
Aluminum
Track - Direct
Attachment to
Structure**



**450 C&D
Track - 2.5"
Drop Rod to
Structure**



425 Aluminum Track -
up to 525 lb weight per Carrier
850 Aluminum Track -
up to 850 lb weight per Carrier
850 Steel Track -
up to 850 lb weight per Carrier

* Estimated panel weights are for intermediate panels. Weight may vary due to substrate, size, or function of panel. Add 105 lbs [47kg] for pass door. Add 6 lbs [3kg] per lin ft height for expanders. Add 3.5 to 8 lbs [1.6 to 3.6kg] per lin ft for track.

Standard Acoustical Substrate:

- 2000 (3") 42^{STC} (6.5 lb./ft²)
- 2000 (3") 45^{STC} (8.5 lb./ft²)
- 2000 (3") 49^{STC} (9 lb./ft²)
- 2000 (3") 50^{STC} (9 lb./ft²)

Optional Steel Skins:

- 2000 (3") 49^{STC} (10.9 lb./ft²)
- 2000 (3") 51^{STC} (11 lb./ft²)

▼ Vert_Track-Carrier Support.dwg

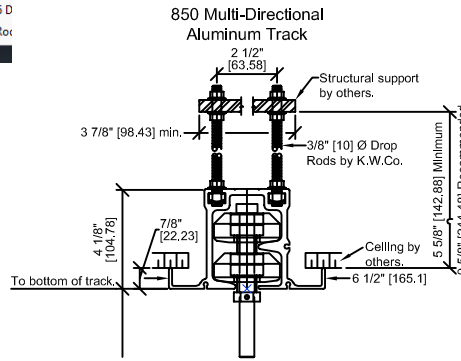
▼ Vert_Track-Carrier GL Support.dwg

Multi-Directional Track Support Options

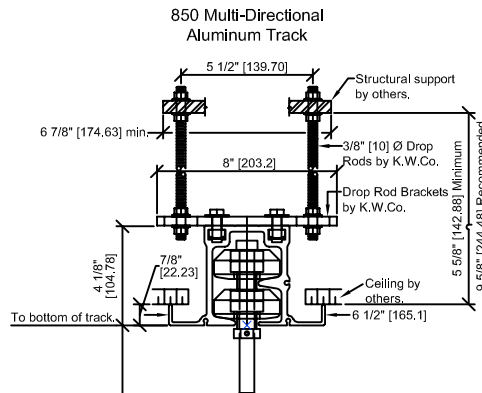
Hinged Pair (Single Carrier) Track Support Options

850 Aluminum Track - up to 850 lb weight per Carrier: *Max ht 16'-2" (See Weight Chart)

**850
Aluminum
Track - 2.5"
Drop Rod to
Structure**



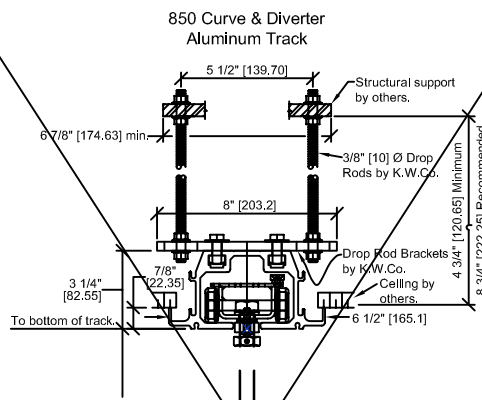
**850
Aluminum
Track - 5.5"
Drop Rod to
Structure**



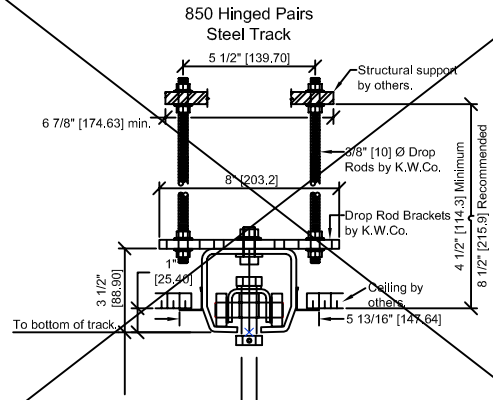
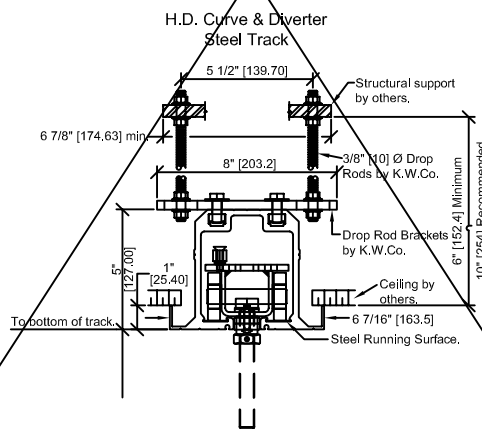
**850 C&D Track - up to 850 lb weight per Carrier:
*Max ht 30'-0" (See Weight Chart)**

**850 Steel Track - up to 850 lb weight per Carrier:
*Max ht 16'-2" (See Weight Chart)**

**850 C&D and
Steel Track -
5.5" Drop Rod
to Structure**



**HD850 C&D
Track - 5.5"
Drop Rod to
Structure**



**425 Aluminum Track -
up to 525 lb weight per Carrier**
**850 Aluminum Track -
up to 850 lb weight per Carrier**
**850 Steel Track -
up to 850 lb weight per Carrier**

* Estimated panel weights are for intermediate panels. Weight may vary due to substrate, size, or function of panel. Add 105 lbs [47kg] for pass door. Add 6 lbs [3kg] per lin ft height for expanders. Add 3.5 to 8 lbs [1.6 to 3.6kg] per lin ft for track.

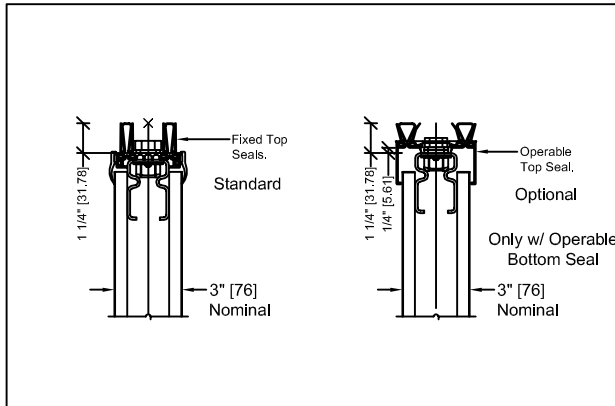
Standard Acoustical Substrate:
• 2000 (3") 42^{STC} (6.5 lb./ft²)
• 2000 (3") 45^{STC} (8.5 lb./ft²)
• 2000 (3") 49^{STC} (9 lb./ft²)
• 2000 (3") 50^{STC} (9 lb./ft²)

Optional Steel Skins:
• 2000 (3") 49^{STC} (10.9 lb./ft²)
• 2000 (3") 51^{STC} (11 lb./ft²)

▼ Vert_Track-Carrier Support.dwg

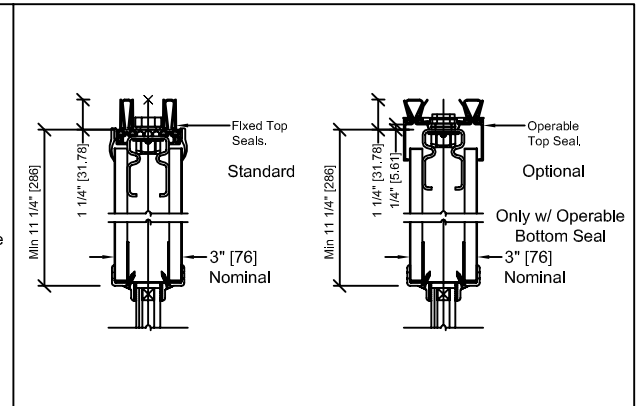
▼ Vert_Track-Carrier GL Support.dwg

Model 2000 - Top Seal Condition



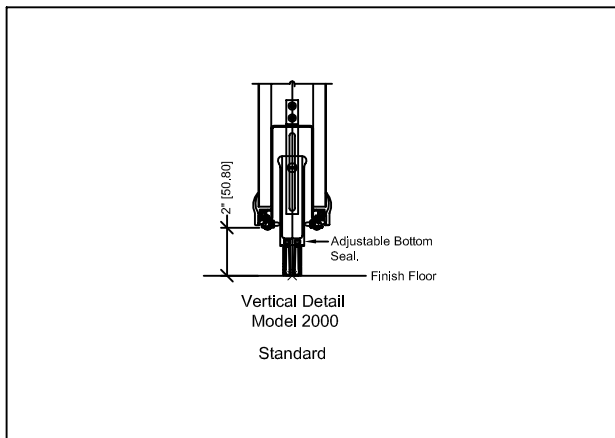
▼ Vert_2000 - 3000 Top Operation.dwg

Model 2000 - Top Seal Condition



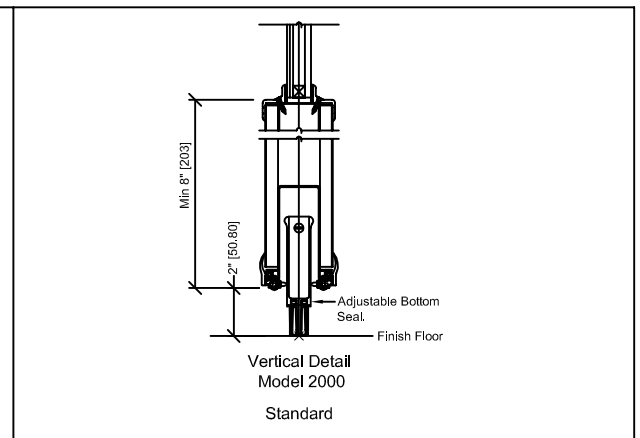
▼ Vert_2000 - 3000 GL Top Operation.dwg

Model 2000 - Bottom Seal Condition

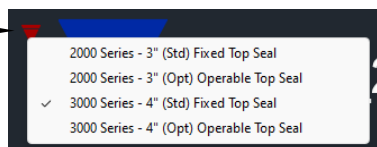
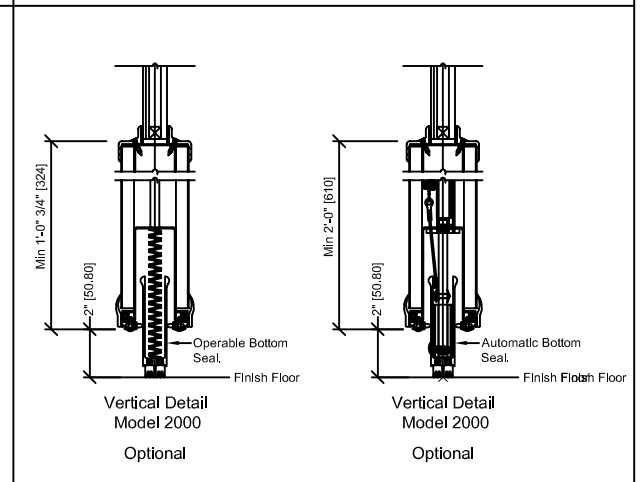
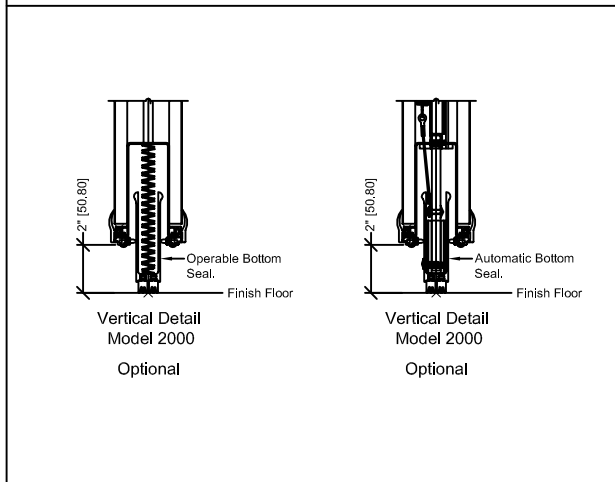


▼ Vert_2000 - 3000 Bottom Seal Type.dwg

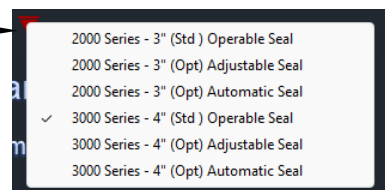
Model 2000 - Bottom Seal Condition



▼ Vert_2000 - 3000 GL Bottom Seal Type.dwg

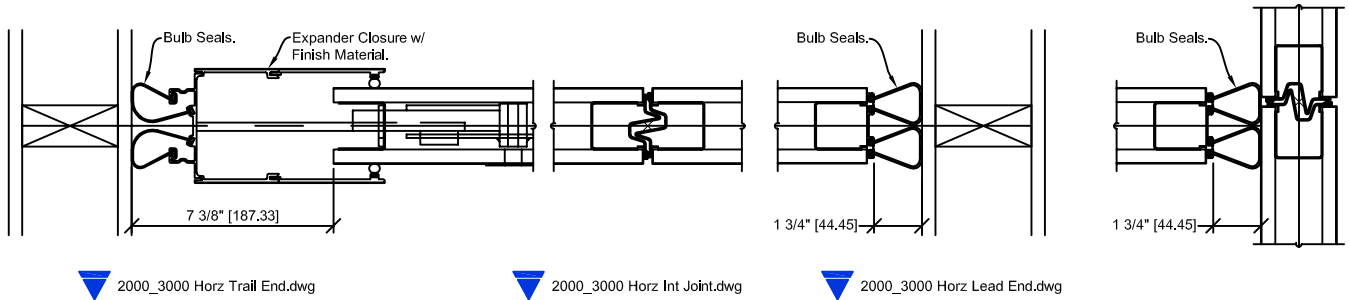


Select Triangle for Drop-down Menu

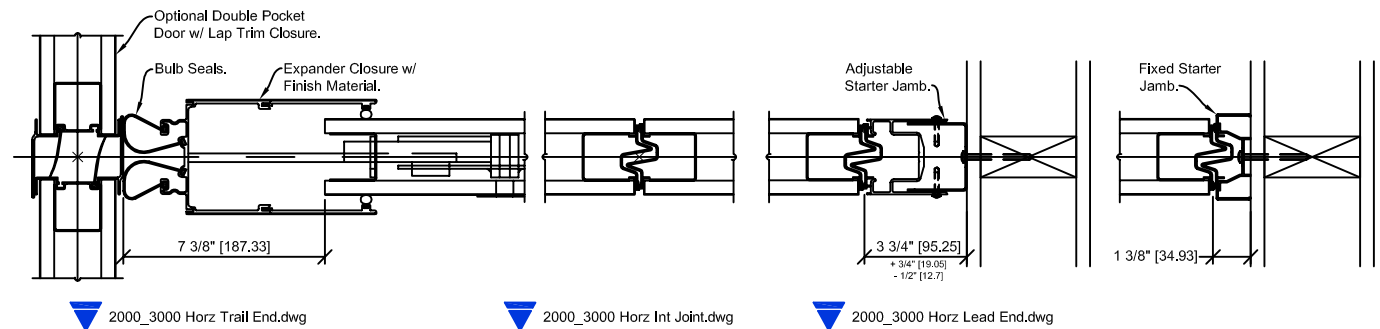


Select Triangle for Drop-down Menu

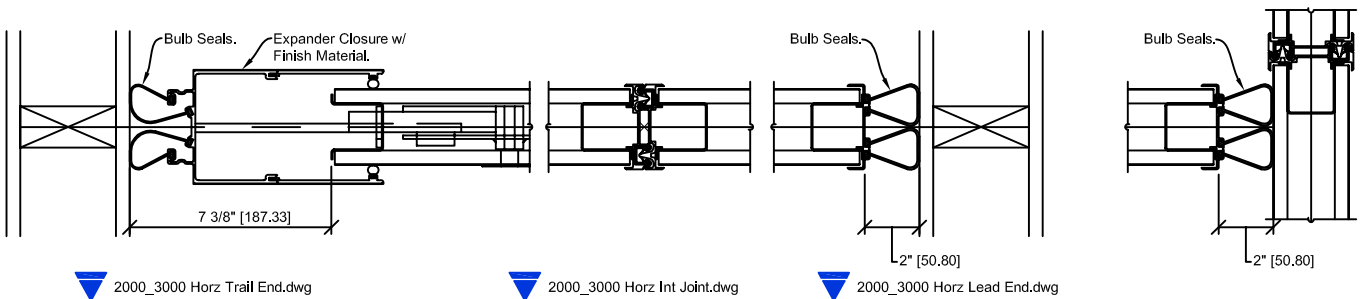




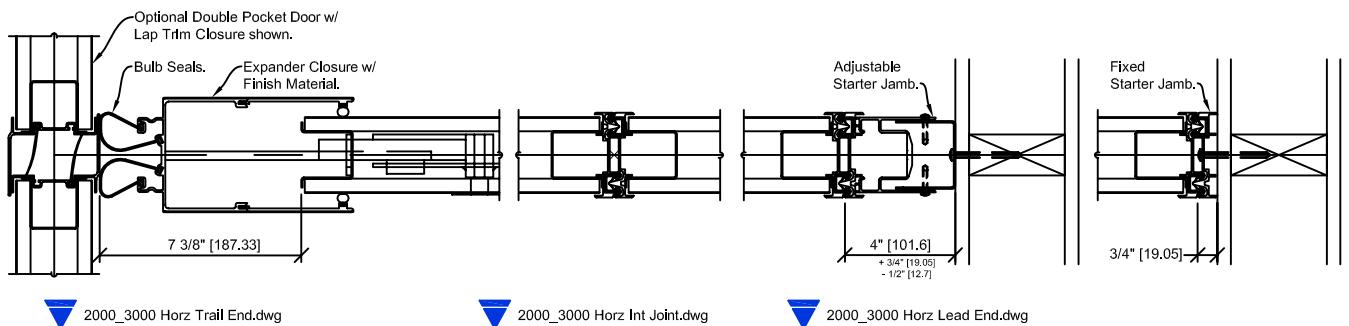
2000 Trimless Sealing to Wall Option



2000 Trimless Sealing to Pocket Door Option

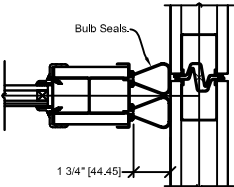


2000 Cap "Trimmed" Sealing to Wall Option

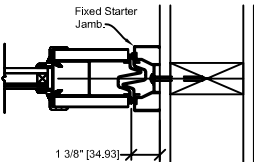


2000 Cap "Trimmed" Sealing to Pocket Door Option

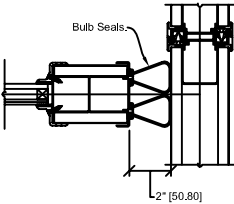
Alternate Lead Conditions



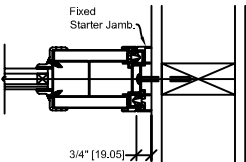
2000_3000 GL Horiz Lead End.dwg



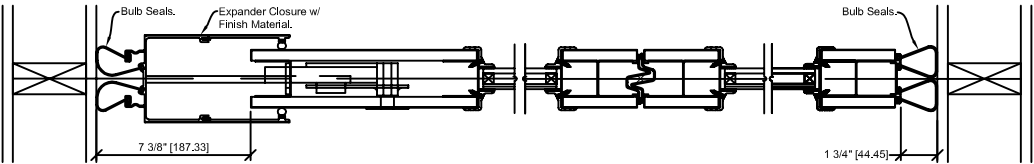
2000_3000 GL Horiz Lead End.dwg



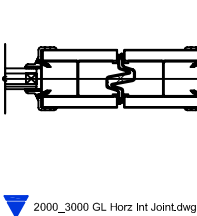
2000_3000 GL Horiz Lead End.dwg



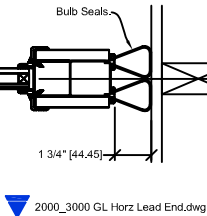
2000_3000 GL Horiz Lead End.dwg



2000_3000 GL Horiz Trail End.dwg

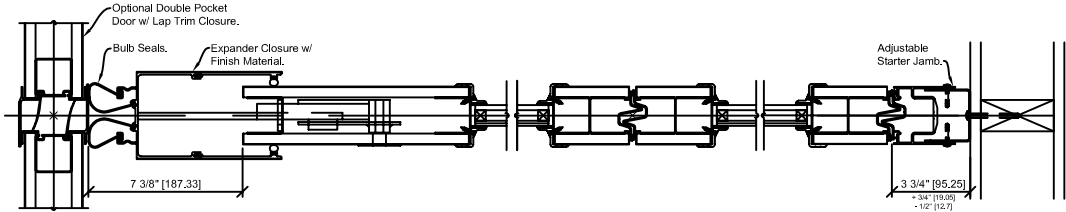


2000_3000 GL Horiz Int Joint.dwg

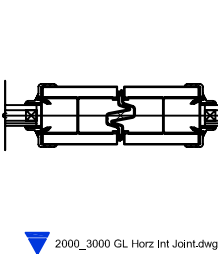


2000_3000 GL Horiz Lead End.dwg

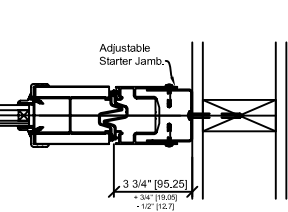
2000GL Trimless Sealing to Wall Option



2000_3000 GL Horiz Trail End.dwg

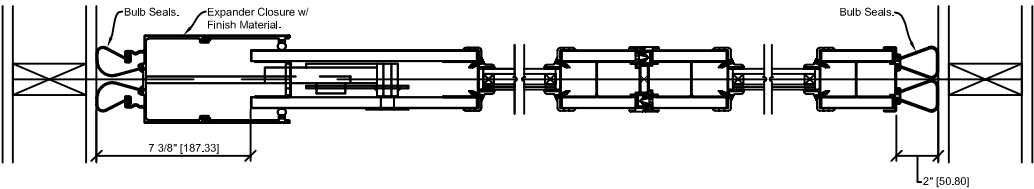


2000_3000 GL Horiz Int Joint.dwg

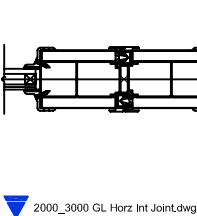


2000_3000 GL Horiz Lead End.dwg

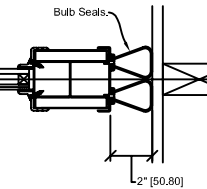
2000GL Trimless Sealing to Pocket Door Option



2000_3000 GL Horiz Trail End.dwg

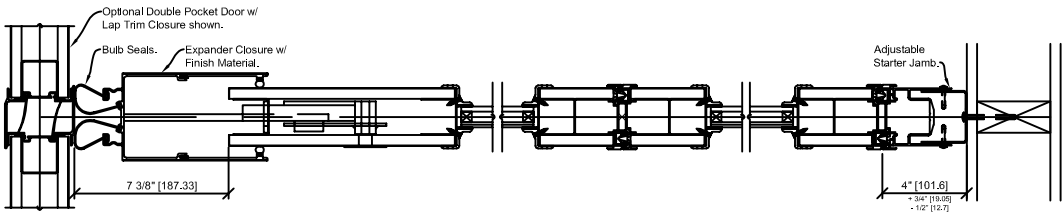


2000_3000 GL Horiz Int Joint.dwg

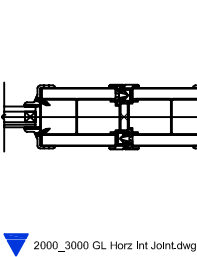


2000_3000 GL Horiz Lead End.dwg

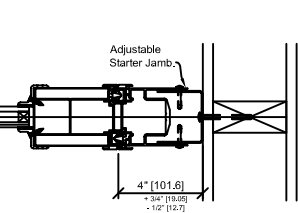
2000GL Cap "Trimmed" Sealing to Wall Option



2000_3000 GL Horiz Trail End.dwg



2000_3000 GL Horiz Int Joint.dwg



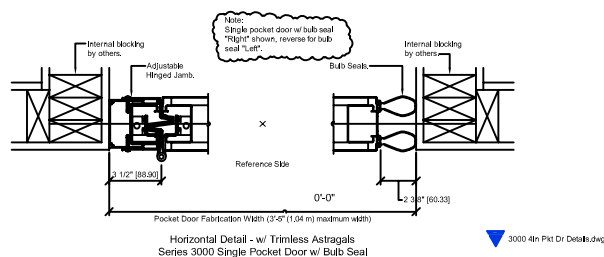
2000_3000 GL Horiz Lead End.dwg

2000GL Cap "Trimmed" Sealing to Pocket Door Option

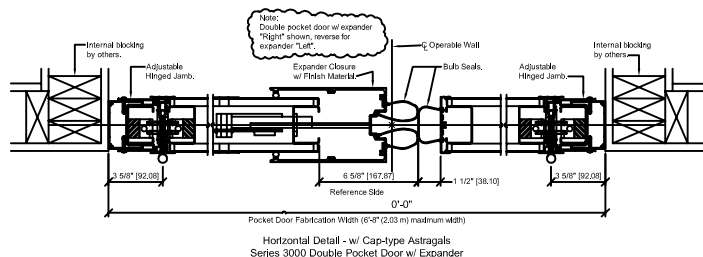
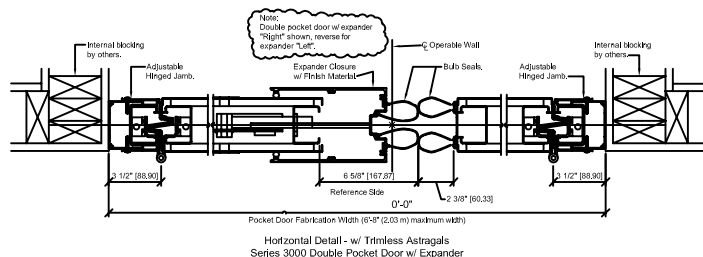
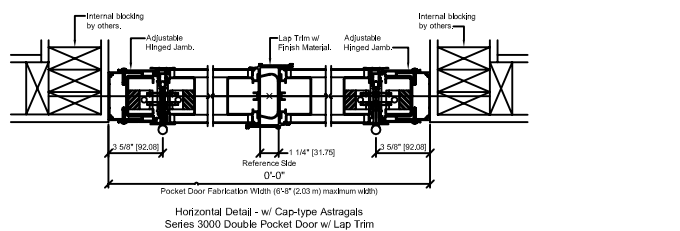
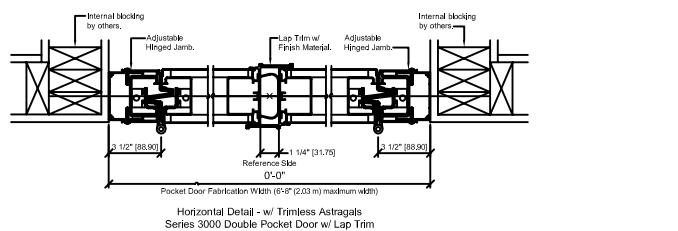
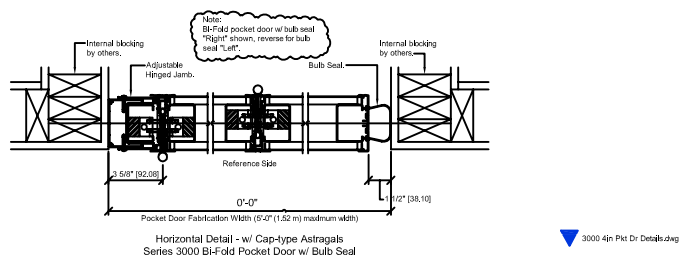
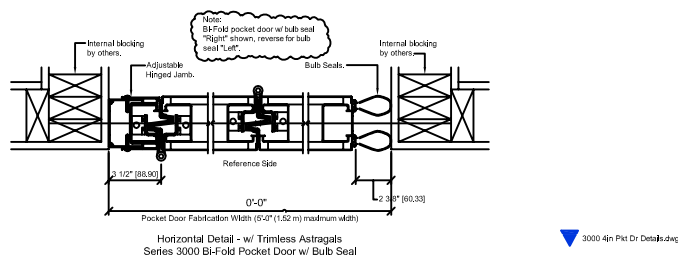
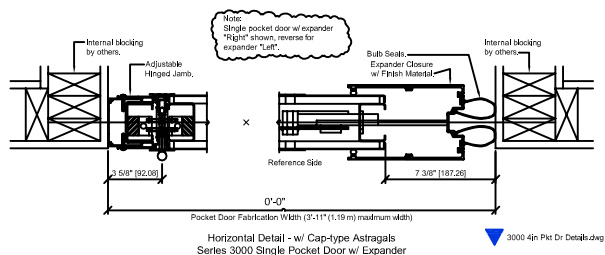
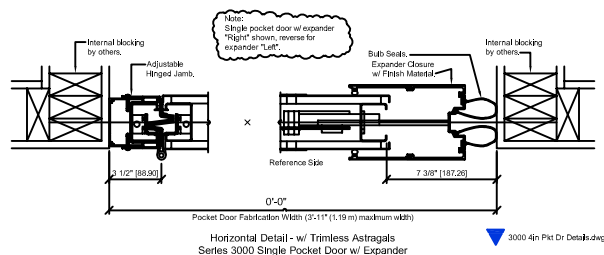
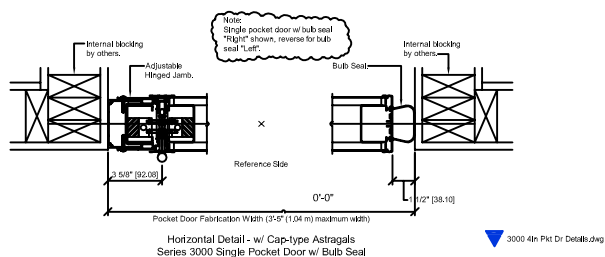




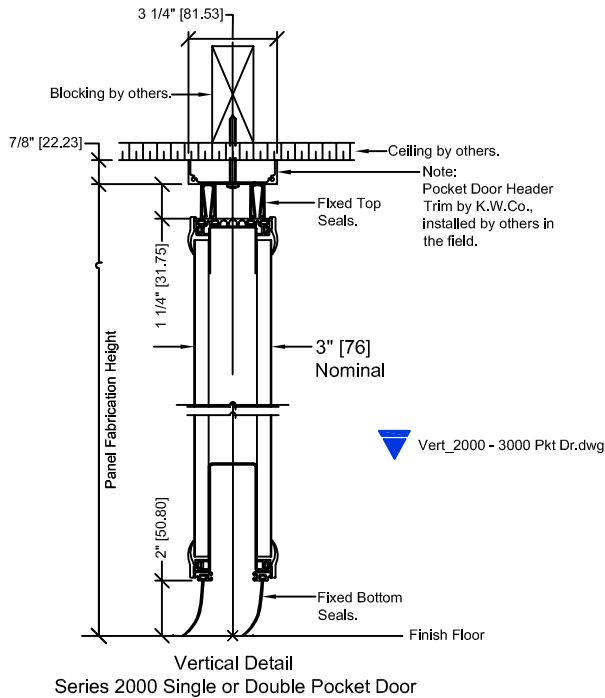
Pocket Door Options



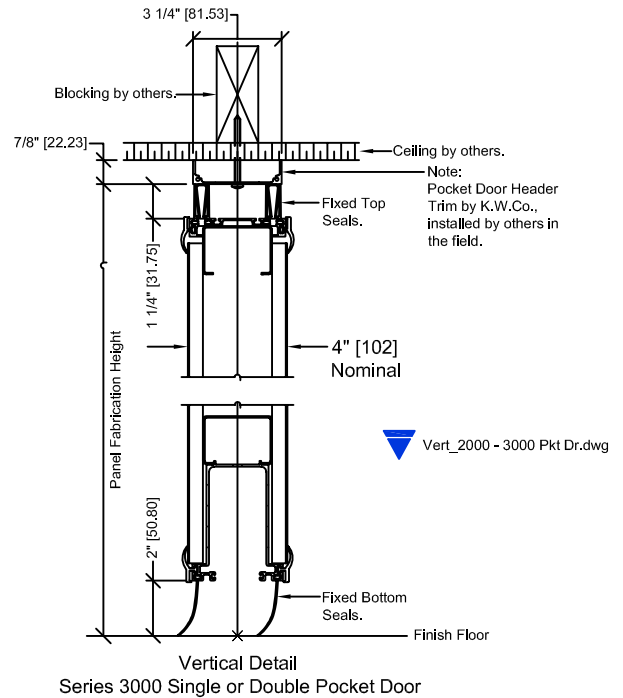
Pocket Door Options - CAP (TRIM)



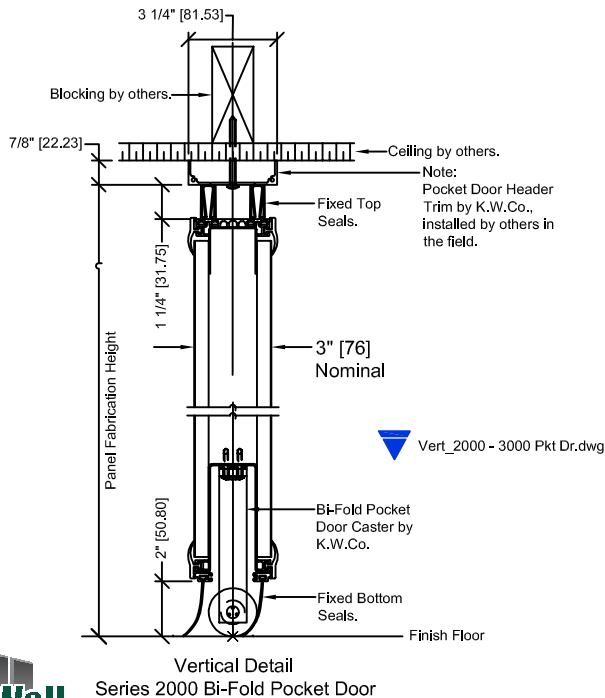
NOTE: Copy and Paste these Blocks into project. Or Insert the blocks per the Noted CAD name from Zip. Use the Triangle Drop-down Menus to meet your project requirement. Call Local Distributor if you have questions.



NOTE: Copy and Paste these Blocks into project. Or Insert the blocks per the Noted CAD name from Zip. Use the Triangle Drop-down Menus to meet your project requirement. Call Local Distributor if you have questions.



NOTE: Copy and Paste these Blocks into project. Or Insert the blocks per the Noted CAD name from Zip. Use the Triangle Drop-down Menus to meet your project requirement. Call Local Distributor if you have questions.



NOTE: Copy and Paste these Blocks into project. Or Insert the blocks per the Noted CAD name from Zip. Use the Triangle Drop-down Menus to meet your project requirement. Call Local Distributor if you have questions.

